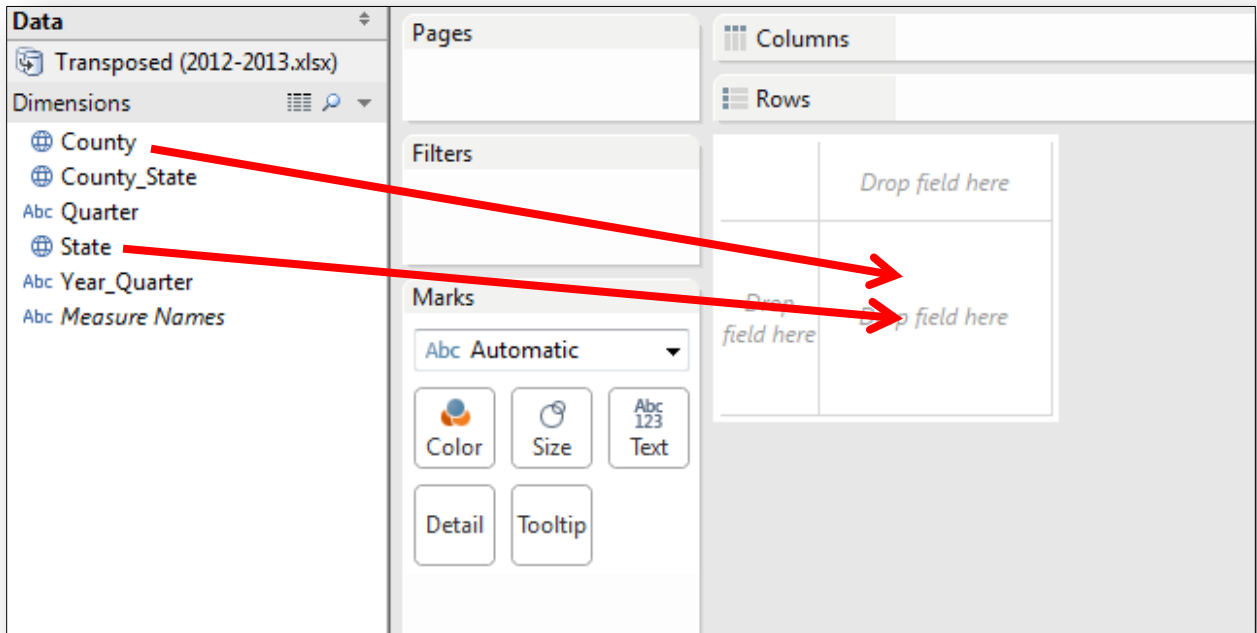


Creating an Interactive Map with Table Public

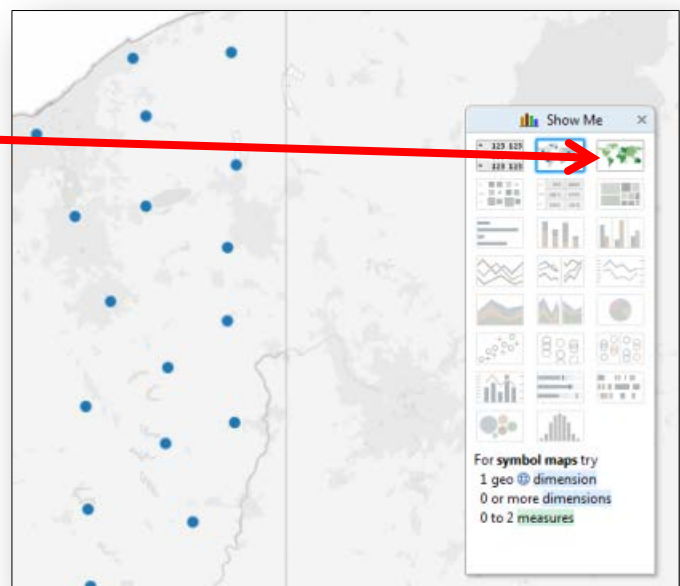
Step 1: Open Data. Choose MS Excel and import the data.

Step 2: Drag the “State” Dimension to the center of the table. Next drag the “County” Dimension



Step 3: Your map will now look like a series of dots. To change it to a Filled Map click on the “Filled Map” view on the show me panel.

Step 4: The map should turn blue now and show the various counties in Ohio. Next we want to apply various data to each of those counties. To do that, you’ll need to work with the “Measures” in the lower right hand part of your screen.

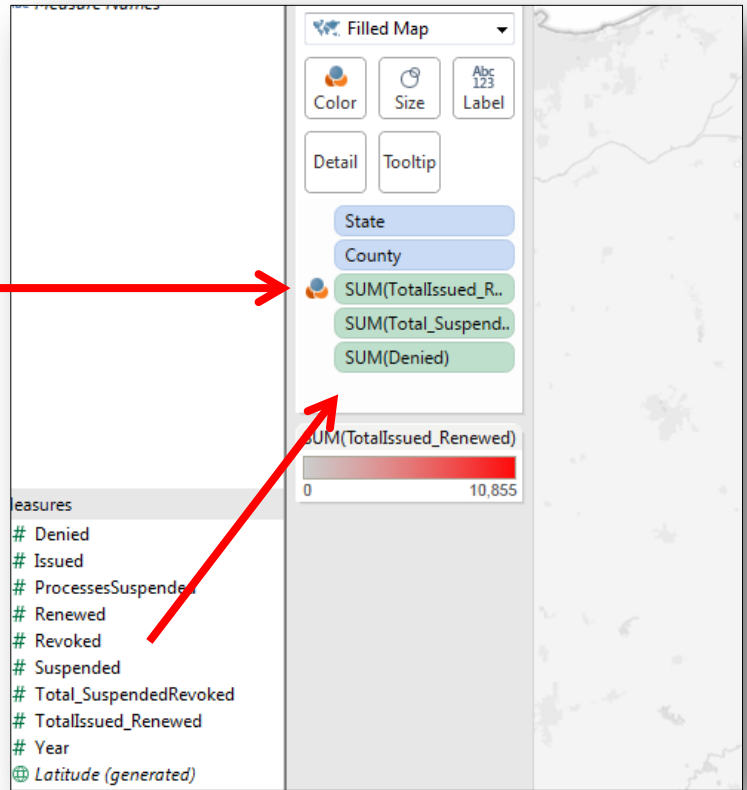


Step 5: Drag in the following measures:

- TotalIssued_Renewed,
- Total_SuspendedRevoked,
- Denied

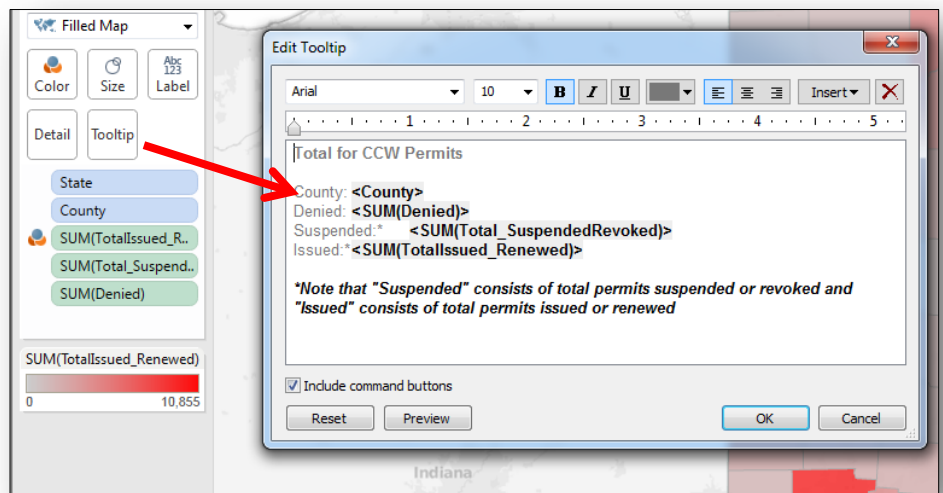
The TotalIssued_Renewed should have three colored circles next to it. This means that this is the measure that will be used to create the various shades on the map.

Now when you hover over a county on the map, you should see the name of the county and the gun data about that county.

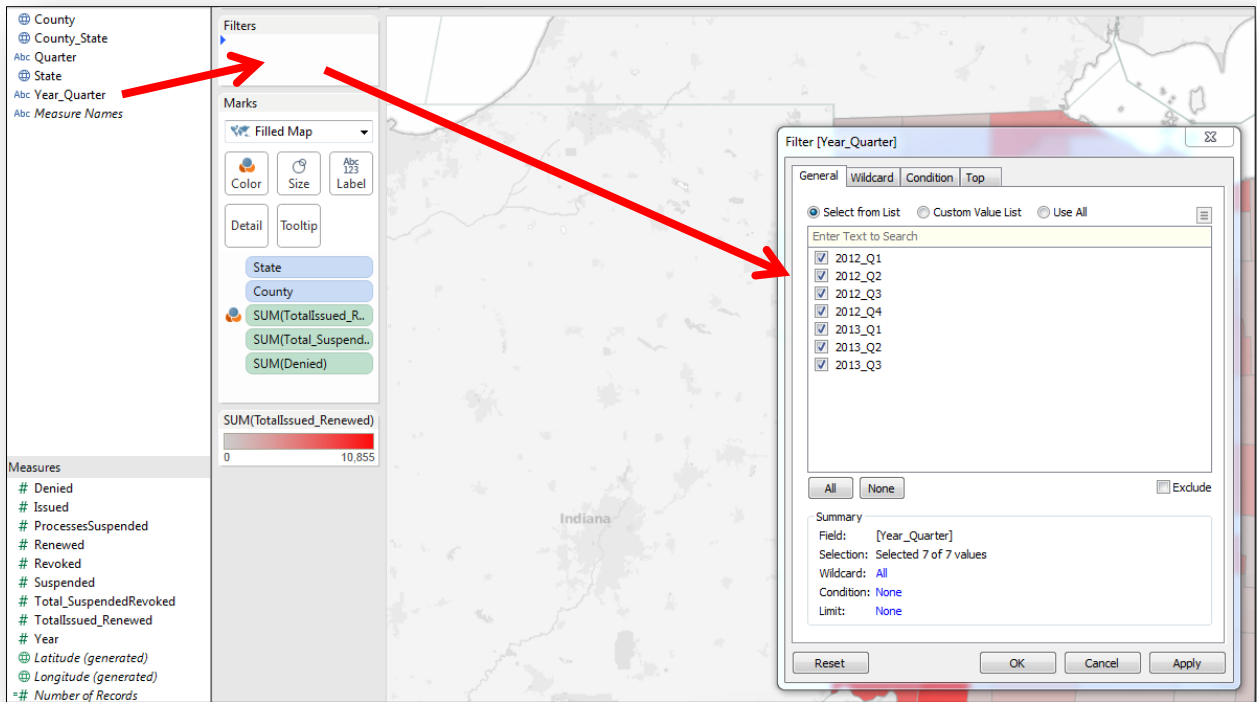


Step 6: The labels in this data wouldn't make any sense to most people, and we don't really need to have the state listed, so we're going to adjust the look of the infobox that appears when we hover over the data. To do this click on the Tooltip option, and edit the content. Here you can see that I deleted the state and added some additional information.

You could add additional text here if needed. (e.g. <county> in Ohio) would put the name of the county and the words "in Ohio" after it. When you are finished click OK, and you will see the changes when you hover a county.

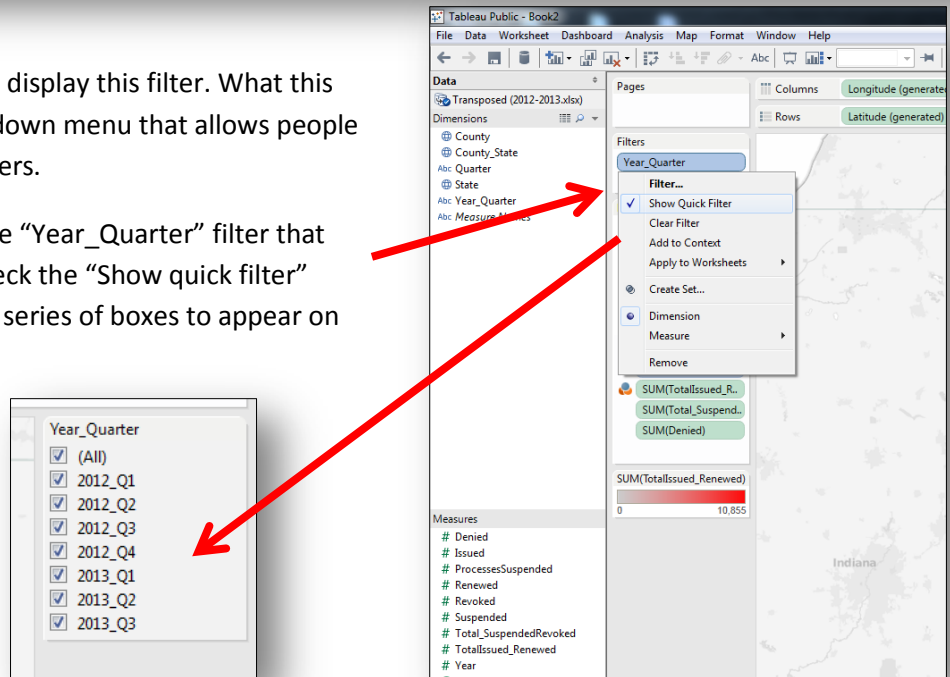


Step 7: Next we want people to be able see how many permits are issued by each quarter and year. To do this, drag the “Year_Quarter” Dimension to the Filters section. A dialog box will pop up. If you check only one box (e.g. 2012_Q1), the default display for this map will be ONLY the Total Permits Issued for that quarter. If you check all the boxes, it will display the Total Number of Permits Issued for ALL the years combined. I’m going to check all. When you are finished click OK, and you will see “Year_Quarter” appear in the filter area.

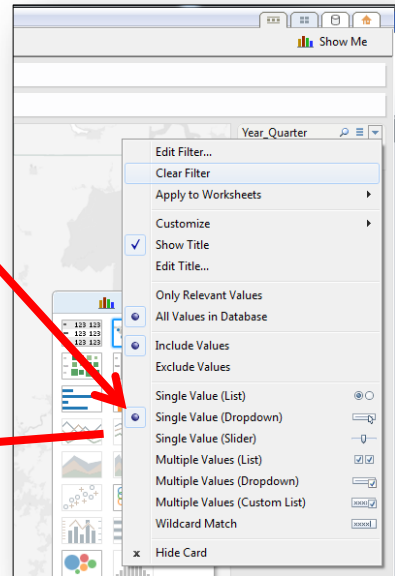
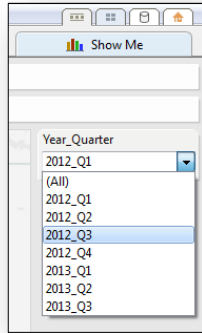


Step 9: Now we want to display this filter. What this will do is create a drop down menu that allows people to select different quarters.

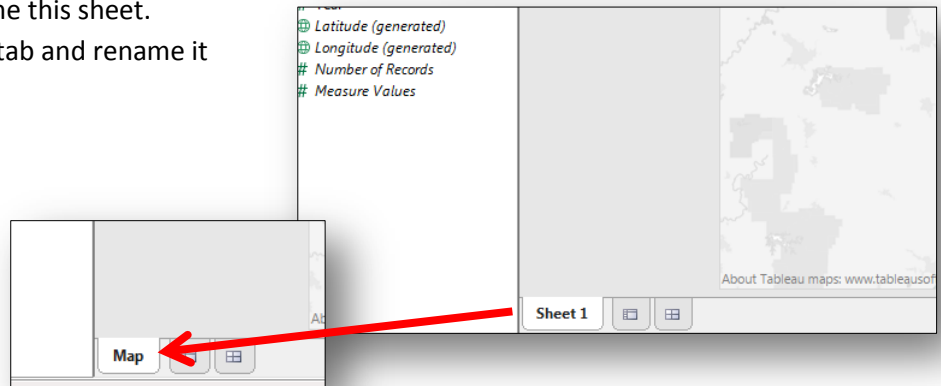
To do this hover over the “Year_Quarter” filter that you just created and check the “Show quick filter” option. This will cause a series of boxes to appear on the right of the map.



Step 10: Now hover over this box, and check off the option for single value drop down. This makes this filter a drop down box. The effect is that people can look at the number of permits issued at various quarters during various years.



Step 11: We're going to rename this sheet. Double click on the "Sheet 1" tab and rename it map.



Step 12: Your final map should look like this.

In the next section we're going to create other charts that interact with this map.

